



NELSON TIMBER SOLUTIONS

Nelson Timber Solutions (NTS) Consortium brings the knowledge and commercial experience to help you deliver multi-storey timber constructions, which are cutting edge, sustainable and as attractive economically as they are aesthetically.

We are a collective of leading timber-oriented organisations who recognise the potential of working together to realise the benefits of large timber buildings.

NTS provides a complete solution for your timber construction process.

- + Free concept design service
- + Certified structural design
- + Supply of pre-fabricated timber components for your project.

NTS takes responsibility for the structural design and supply of the timber members.

Our Solution

NTS provides the most cost effective options for optimising design, fabrication and supply of engineered timber components. Our solution provides for multi-storey buildings, clear span floor systems, portal frames, commercial applications, larger residential and architectural solutions.

Timber is the Future

Timber is one of the world's most environmentally friendly construction products. It is renewable, sustainable, natural and stores carbon over its life span as a structural product. By building with timber, owners, architects, manufacturers and construction companies can reduce a building's carbon footprint and reduce the amount of greenhouse gases emitted compared with other building materials. The strength to weight ratio of engineered timber is twice that of steel and has superior fire resistance, corrosion resistance, proven reliability and significant cost advantages. Lighter materials mean reduced seismic forces and foundation loads and timber is an easier material to work with.



Potius Floor Panels span up to 11m and boast rapid installation and light weight.



Pre-fabricated post and beam construction for buildings up to five storeys tall.

Nelson Timber Solutions Engineered Wood Products



"Sadies by the Sea", American Samoa.

Laminated Veneer Lumber (LVL): LVL is a product manufactured by rotary peeling veneers which are laminated under heat and pressure to form a highly consistent and exceptionally strong engineered material.

Glulam: Glulam is a visually attractive product formed by laminating sawn pieces of timber together into straight or curved forms. Glulam is suitable for large, exposed timber members where aesthetics are important.

Machine Stress Graded (MSG) Timber: MSG Timber has been mechanically sawn and tested to ensure it is consistent in quality. MSG Timber is suitable for all general and structural framing needs where a laminated product is not required.



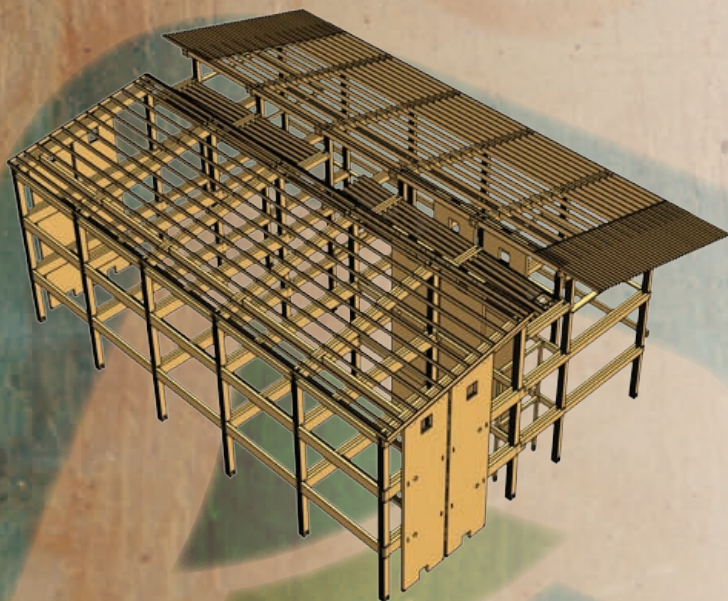
Single storey warehouse type buildings, incorporating large open spans.

Pre-fabricated Timber Building Systems

Pre-fabricated timber components arrive on site ready to be installed by the construction company, saving time and money. The light weight of the timber components reduces the need for heavy lifting cranes and increases speed of construction. On site Health and Safety is increased by using lower weight members.

Free Concept Design Service

NTS offers a free concept design and pricing service and experienced technical support for your timber project. Alternatively we can re-engineer your existing steel or concrete design to utilise the latest technology in timber solutions and provide a price comparison.



The NMIT (Nelson Marlborough Institute of Technology) new visual arts centre.

Consortium Members

- + Nelson Pine Industries Limited
- + Hunter Laminates Nelson Limited
- + Potius Building Systems Limited
- + Robin Frengley Consulting Engineer Limited
- + Tasman Consulting Engineers Limited
- + DesignBASE Limited

Contact Details

- + Email sales@NelsonTimberSolutions.co.nz
- + Phone +64 3 544 6006
- + Fax +64 3 544 5189
- + PO Box 3050, Richmond, Nelson 7050, NZ